

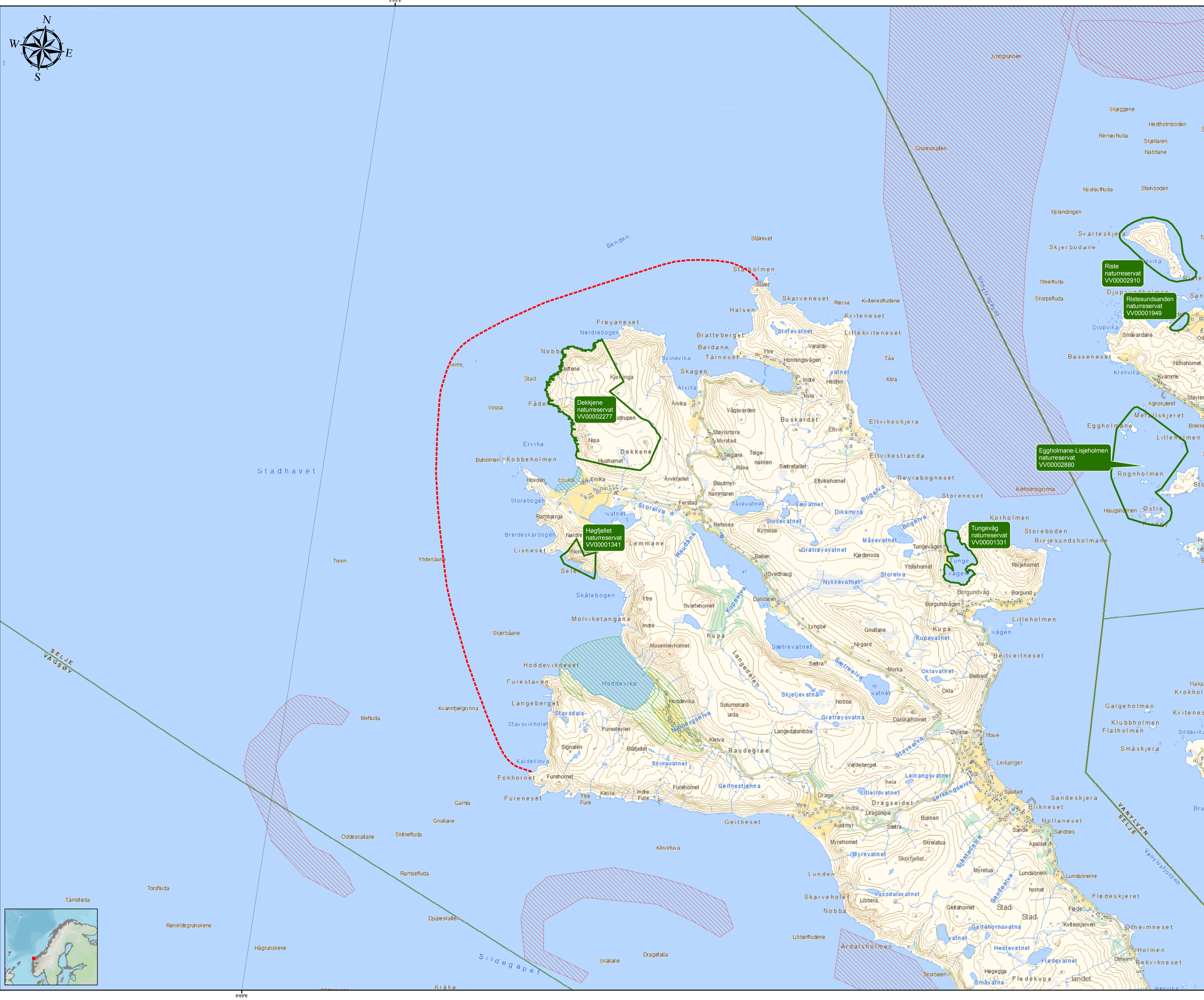
Strategic Environmental  
Oil Spill Response Plan

Stadtlandet

Map title:  
Sites of highest environmental priority/  
Høyeste miljøprioriterte lokaliteter

**Legend**

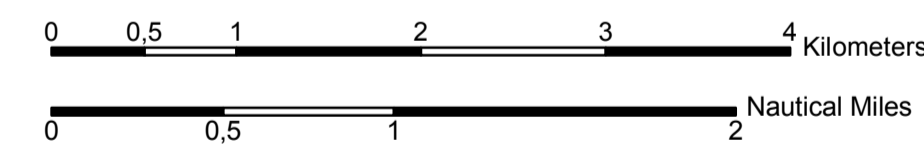
- - - Selected case area/Utvalgt område
- Protected areas/Verneområder
- Marine habitat types A/Marine naturtyper A
- Coastal spawning areas/Kystnære gyteområder



HOW TO USE THIS MAP

In this map, the sites of highest environmental priority are presented.  
The purpose of this map is to show which sites that have the highest priority for protection in an initial phase of an oil spill incident.

Not to be used for navigation



This map is prepared by the Sensitive Environments Decision Support Group (SenseE) within Akvaplan-niva, as part of the strategic environmental oil spill response plan for the area within the map frame.

The concept and format of these thematic maps were developed by SenseE, for a well drilled by Noreco Norway AS in the spring of 2012.

The concept of strategic environmental response plans was published at the IOSC conference in 2010.